



£415,000

5 Bed House - Semi-Detached
located in Lichfield Road


REDSTONES
The Property Experts

Lichfield Road
Walsall
West Midlands
WS4 2HU



£415,000

A deceptively spacious five bedroom semi detached family home arranged over three floors.

This well presented period accommodation comprises of an entrance hall, two reception rooms, dining room, fitted kitchen and cloakroom. Set over the two upper floors are five bedrooms and family bathroom.

The property benefits from a host of period features, gas central heating, mature rear garden and off road parking to the front. Must be viewed to be appreciate what is on offer..

Entrance Hall

Minton tiled flooring, wooden door with secondary glazed pane to front, wooden door with leaded single glazed pane to hall.

Hallway

Minton tiled flooring, radiator, stairs off, doors off, period high ceilings.

Front Reception

16'0" x 11'5"

Wooden flooring, radiator, secondary single glazed sash window to front, feature fire place.

Storage Cupboard

Single glazed window to side, fuse box, electric meter.

Rear Reception

13'9" x 12'5"

Wooden flooring, radiator, single glazed leaded decorative window to side, single glazed French doors to rear with sliding patio door in front.

Dining Room

14'5" x 10'2"

Wood effect laminate flooring, radiator, wooden double glazed sash window with secondary glazed sides, access to kitchen.

Kitchen

12'5" x 8'10"

Wood effect laminate flooring, UPVC double glazed window to side, various wall units, splash back tiling, rolled edge worksurface with cupboards and drawers under, inset stainless steel sink/drainer with water heater and purifier, integrated electric oven and fitted four ring gas hob with extractor over, door to rear hall.

Rear Hall

Tiled flooring, door to WC, door to rear.

WC/Cloakroom

Tiled flooring, frosted UPVC double glazed window to side, low level WC, wall mounted sink fed by water heater.

Verandah

Wooden flooring, single glazed window looking onto patio and rear garden.

Stairs / First Floor Landing

Carpet, secondary glazed sash window to side, doors off, stairs to top floor.



Bedroom One

16'0" x 16'0"

Wooden flooring, radiator, double glazed sash window, secondary glazed bay window, feature fire place, built in cupboard.

Bedroom Two

13'9" x 12'9"

Wooden flooring, radiator, single glazed sash window, built in wardrobe, vanity sink unit, cupboard with Worcester combi boiler.

Bedroom Three

11'1" x 8'10"

Wooden flooring, radiator, single glazed sash window to rear.

Bathroom

Tile effect vinyl cushion flooring, chrome towel radiator, double glazed sash window to side, WC, vanity wash hand basin, bath, mixer shower in cubicle.

Stairs / Top Floor Landing

Carpet, doors off.

Bedroom Four

15'8" x 12'9"

Wooden flooring, radiator, UPVC double glazed window to side, double glazed skylight window, vanity wash hand basin.

Bedroom Five

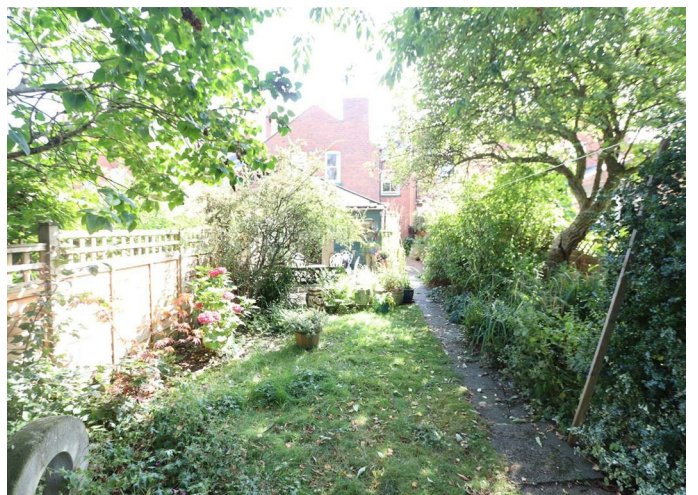
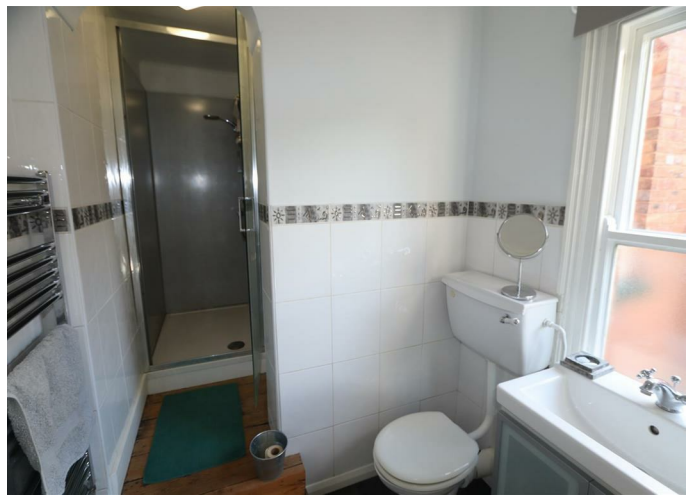
15'8" x 9'10"

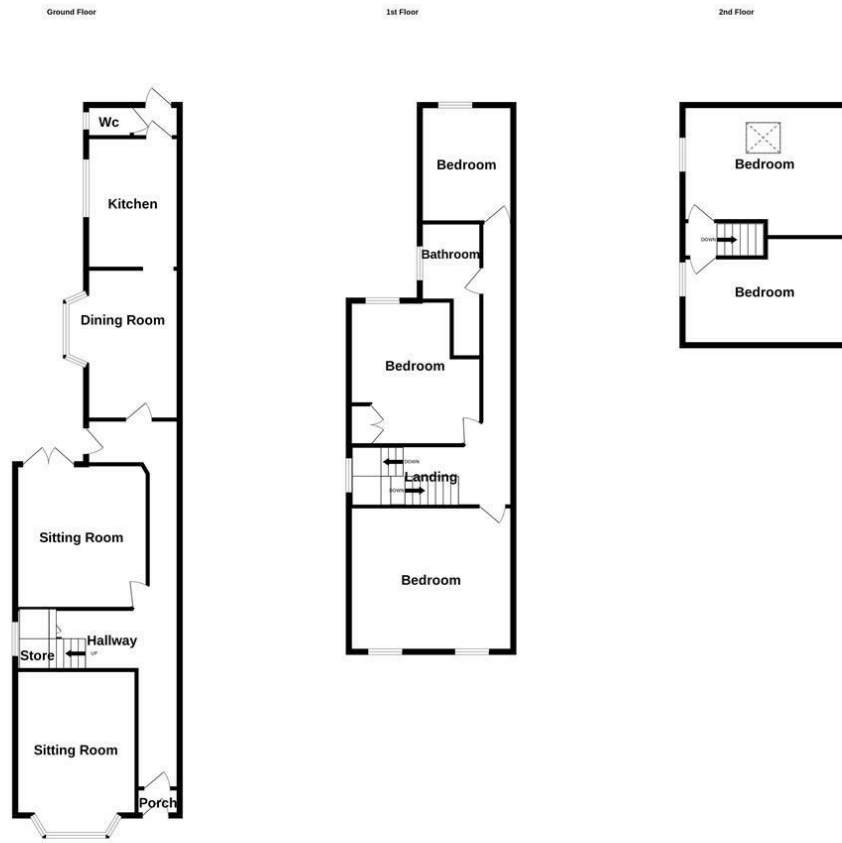
Carpet, UPVC double glazed window to side, under eaves storage.

Rear Garden

Mature garden with patio, lawn, slabbed pathway, bushes, shrubs, trees and shed.

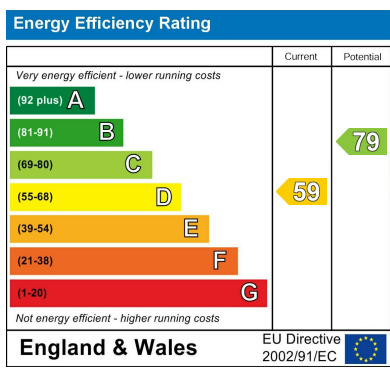






33 Lichfield Road Ws4 2hu

Measurements are approximate. Not to scale. Illustrative purposes only. Made with Metropix ©2024



DIRECTIONS

CONTACT

West Midlands House
 Gypsy Lane
 Willenhall
 West Midlands
 WV13 2HA

E: info@redstones.co.uk
 T: 01922 235 350
<http://www.redstones.co.uk>

