



**£107,500**  
**2 Bed Apartment**  
**located in Little Station Street**

  
**REDSTONES**  
The Property Experts

**Little Station Street  
Walsall  
WS2 9JR**



**£107,500**

\*\*\*IDEAL FOR FIRST TIME BUYERS OR INVESTORS\*\*\*A modern two bedroom ground floor apartment in Walsall town centre. The accommodation comprises of a hallway, open plan lounge, fitted kitchen, two bedrooms, bathroom and en suite shower room. The property benefits from entry phone, UPVC double glazing, electric storage heating and town centre location with shops, bus and train stations nearby. Ideal for first time buyers or investors with an estimated rental potential of £825pcm.

\*\*\*IDEAL FOR FIRST TIME BUYERS OR INVESTORS\*\*\*A modern two bedroom ground floor apartment in Walsall town centre. The accommodation comprises of a hallway, open plan lounge, fitted kitchen, two bedrooms, bathroom and en suite shower room. The property benefits from entry phone, UPVC double glazing, electric storage heating and town centre location with shops, bus and train stations nearby. Ideal for first time buyers or investors with an estimated rental potential of £825pcm.

**Hallway**

Wood effect laminate flooring, electric storage heater, entry phone, storage cupboard, cupboard with water cylinder.

**Lounge**

13'9" x 13'1"

Open plan to kitchen, wood effect laminate flooring, electric storage heater, UPVC double glazed windows.

**Kitchen**

13'1" x 5'10"

Wood effect laminate flooring, various wall units, splash back tiling, rolled edge worksurface with cupboards and drawers under, inset sink, integrated electric oven, fitted hob with extractor hood over, integrated fridge freezer, Beko washing machine.

**Bedroom One**

13'9" x 10'6"

Wood effect laminate flooring, electric storage heater, UPVC double glazed window, door to ensuite.

**Ensuite**

Tiled flooring, wall mounted fan heater, WC, pedestal wash hand basin, electric shower in cubicle.

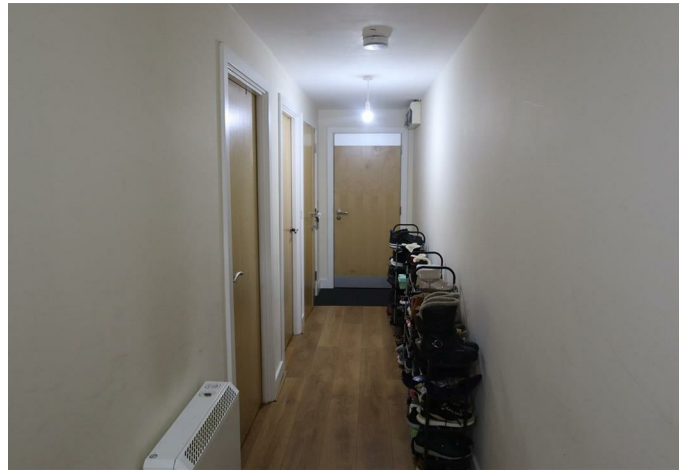
**Bedroom Two**

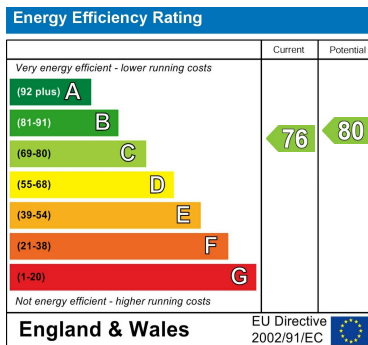
13'9" x 8'10"

Wood effect laminate flooring, electric storage heater, UPVC double glazed window.

**Bathroom**

Tiled flooring, wall mounted fan heater, WC, pedestal wash hand basin, bath with electric shower over, UPVC frosted double glazed window.





## DIRECTIONS

### CONTACT

West Midlands House  
Gypsy Lane  
Willenhall  
West Midlands  
WV13 2HA

E: [info@redstones.co.uk](mailto:info@redstones.co.uk)  
T: 01922 235 350  
<http://www.redstones.co.uk>

