

**0 Bed
Land - Building Plot
located in Wednesfield**


REDSTONES
The Property Experts

**Gorse Road
Wednesfield
WV11 2PY**



£150,000

LAND WITH PLANNING PERMISSION

A fantastic development opportunity to purchase land on the popular Ashmore Park estate with

Planning Permission for the erection of a three and four bedroom semi detached house.

We have been advised 121.5m2 footprint of both plots together.

Wolverhampton Planning application number: 22/01153/FUL.

Buyers will have access to all drawings and contact with architect.

Note: Prospective buyers are advised to make their own enquiries with Wolverhampton Planning Department about any planning decision notice.

LAND WITH PLANNING PERMISSION

A fantastic development opportunity to purchase land on the popular Ashmore Park estate with

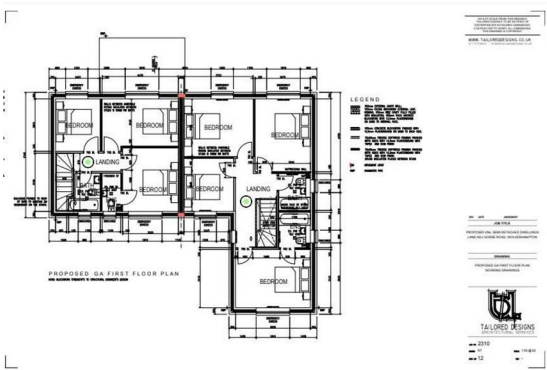
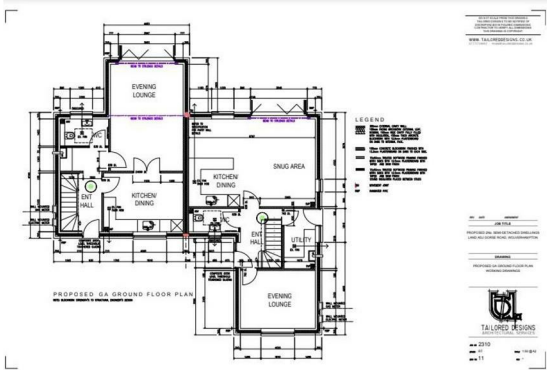
Planning Permission for the erection of a three and four bedroom semi detached house.


We have been advised 121.5m2 footprint of both plots together.

Wolverhampton Planning application number: 22/01153/FUL.

Buyers will have access to all drawings and contact with architect.

Note: Prospective buyers are advised to make their own enquiries with Wolverhampton Planning Department about any planning decision notice.



Energy Efficiency Rating		
	Current	Potential
<i>Very energy efficient - lower running costs</i>		
(92 plus) A		
(81-91) B		
(69-80) C		
(55-68) D		
(39-54) E		
(21-38) F		
(1-20) G		
<i>Not energy efficient - higher running costs</i>		
England & Wales	EU Directive 2002/91/EC	

DIRECTIONS

CONTACT

West Midlands House
Gypsy Lane
Willenhall
West Midlands
WV13 2HA

E: info@redstones.co.uk
T: 01922 235 350
<http://www.redstones.co.uk>

